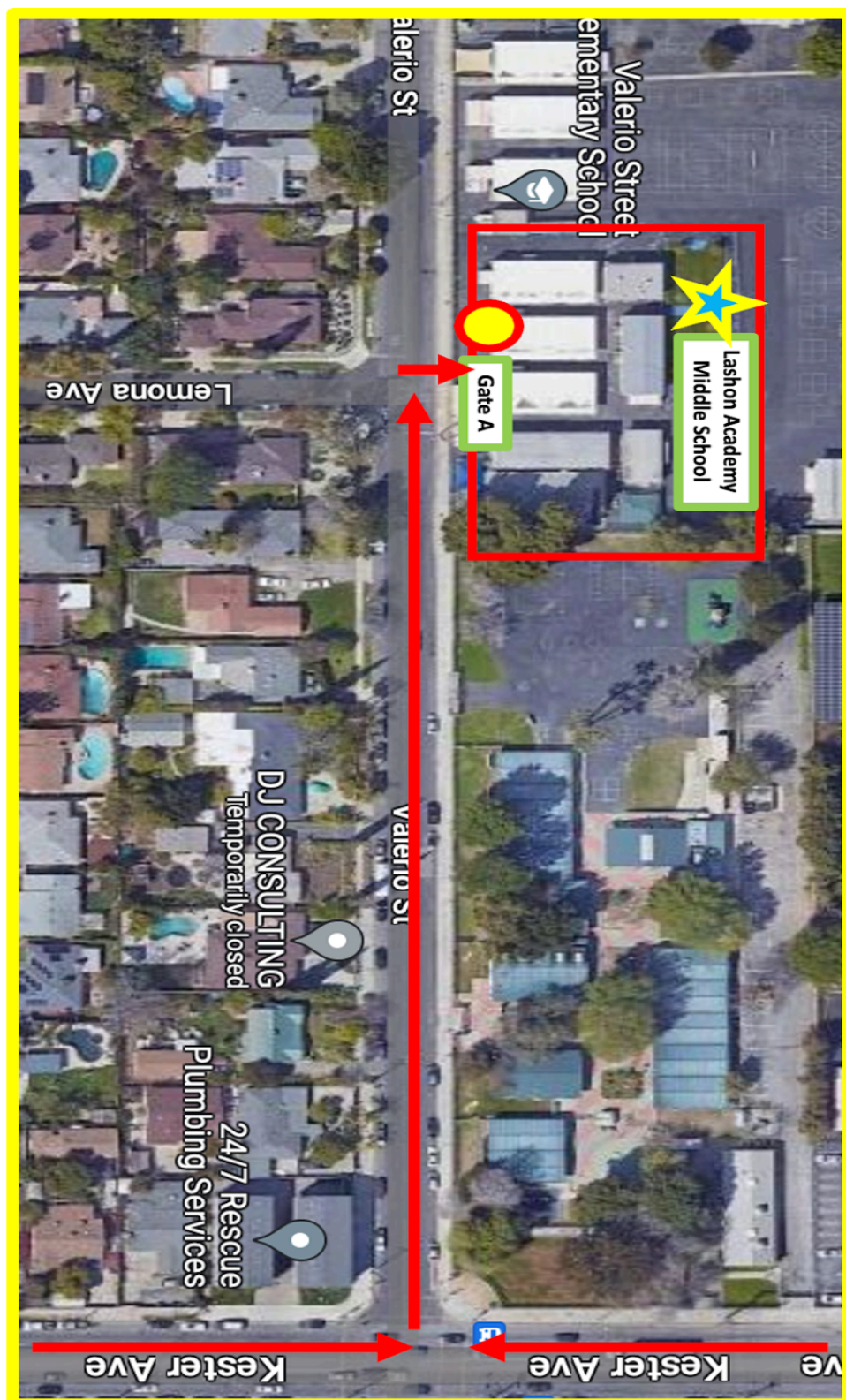


Valley Middle School 6th-8th Grades



Lashon Academy Valley (ETK-8th) | 7477 Kester Avenue, Los Angeles, CA 91405
Lashon Valley Village (ETK-K) | 12326 Riverside Drive, Valley Village, CA 91607

6th-8th Grade Arrival and Dismissal Procedures

REGULAR DAYS (M/TU/TH/F)

Drop off and pick up at Valerio campus only

	Arrival (7:40am-8:10am)	Dismissal (3:16pm-3:30pm)
6th-8th Grades	<ul style="list-style-type: none"> → Students will enter Gate A (Valerio Gate) ◆ → Breakfast will be available prior to the start of school → Students will be marked tardy after Homeroom ends (8:20am) 	<ul style="list-style-type: none"> → Students will exit school through Gate A off of Valerio Street. → Gate A closes promptly at 3:45pm → Late students must be picked up from the Main Office.

WEDNESDAY MINIMUM DAY

Drop off and pick up at Valerio campus only

	Arrival (7:40am-8:10am)	Dismissal (1:43pm-2:00pm)
6th-8th Grades	<ul style="list-style-type: none"> → Students will enter Gate A (Valerio Gate) → Breakfast will be available prior to the start of school → Students will be marked tardy after Homeroom ends (8:20am) 	<ul style="list-style-type: none"> → Students will exit school through Gate A off of Valerio Street. → Gate A closes promptly at 1:45pm → Late students must be picked up from the Main Office.